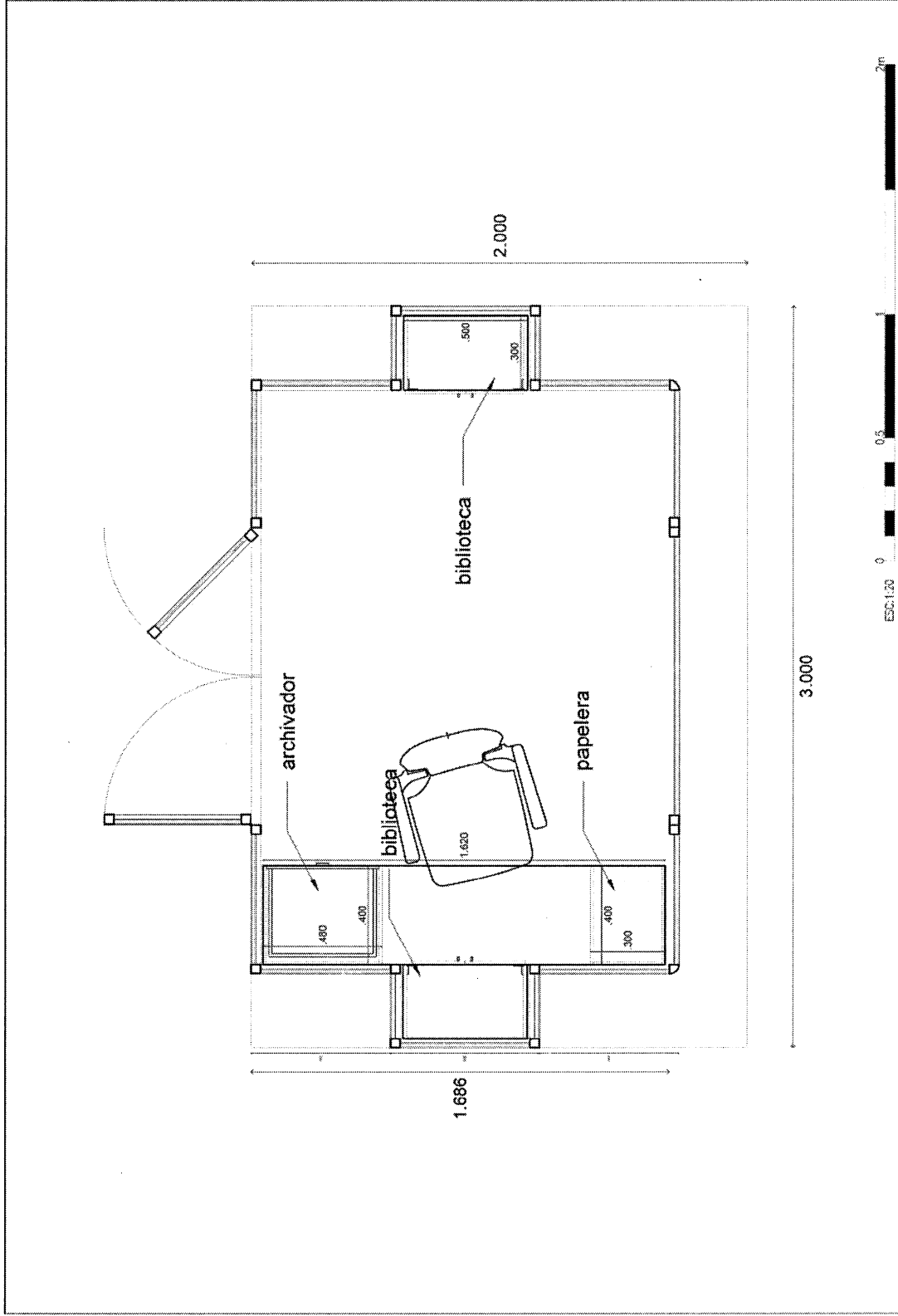
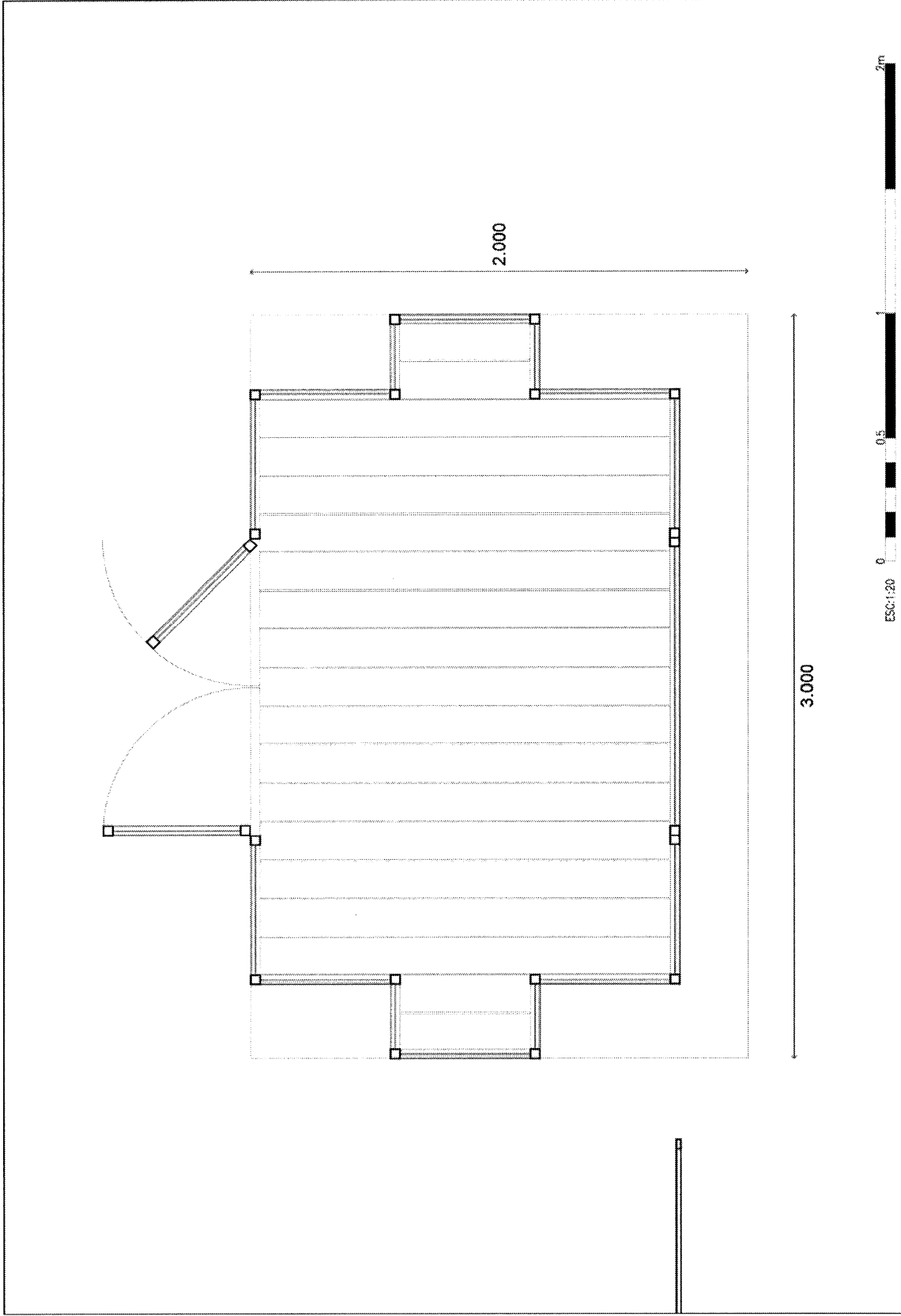
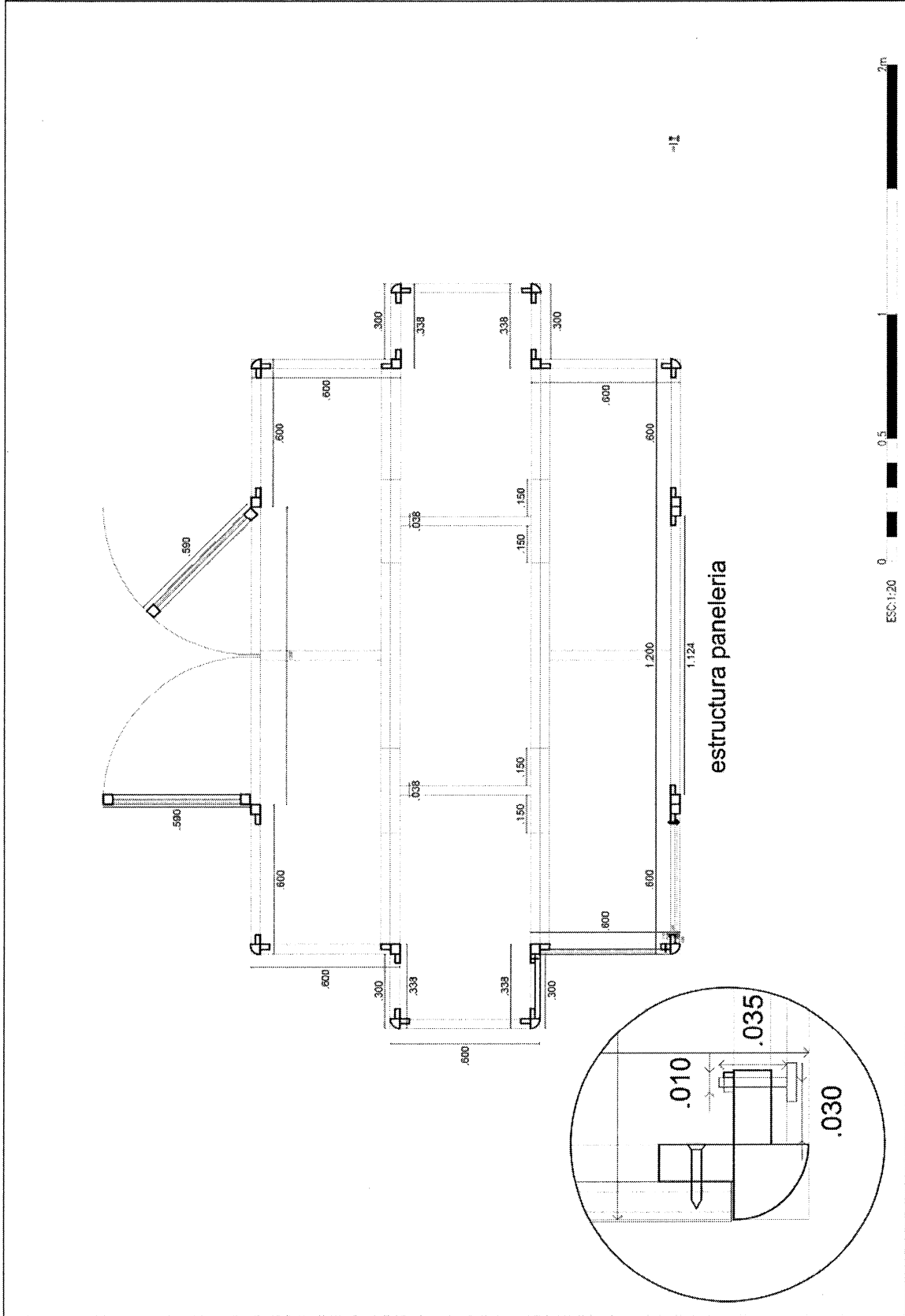
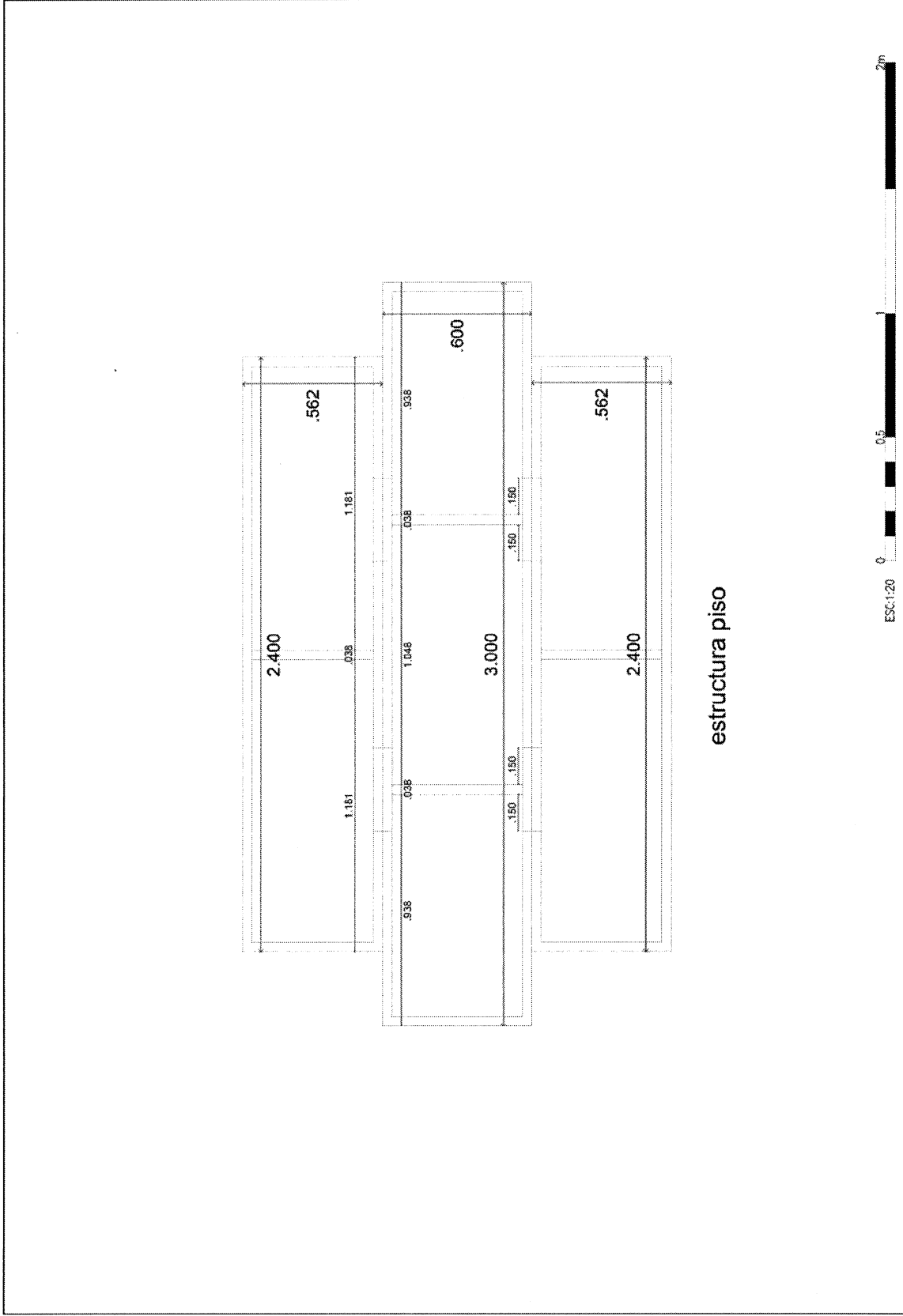


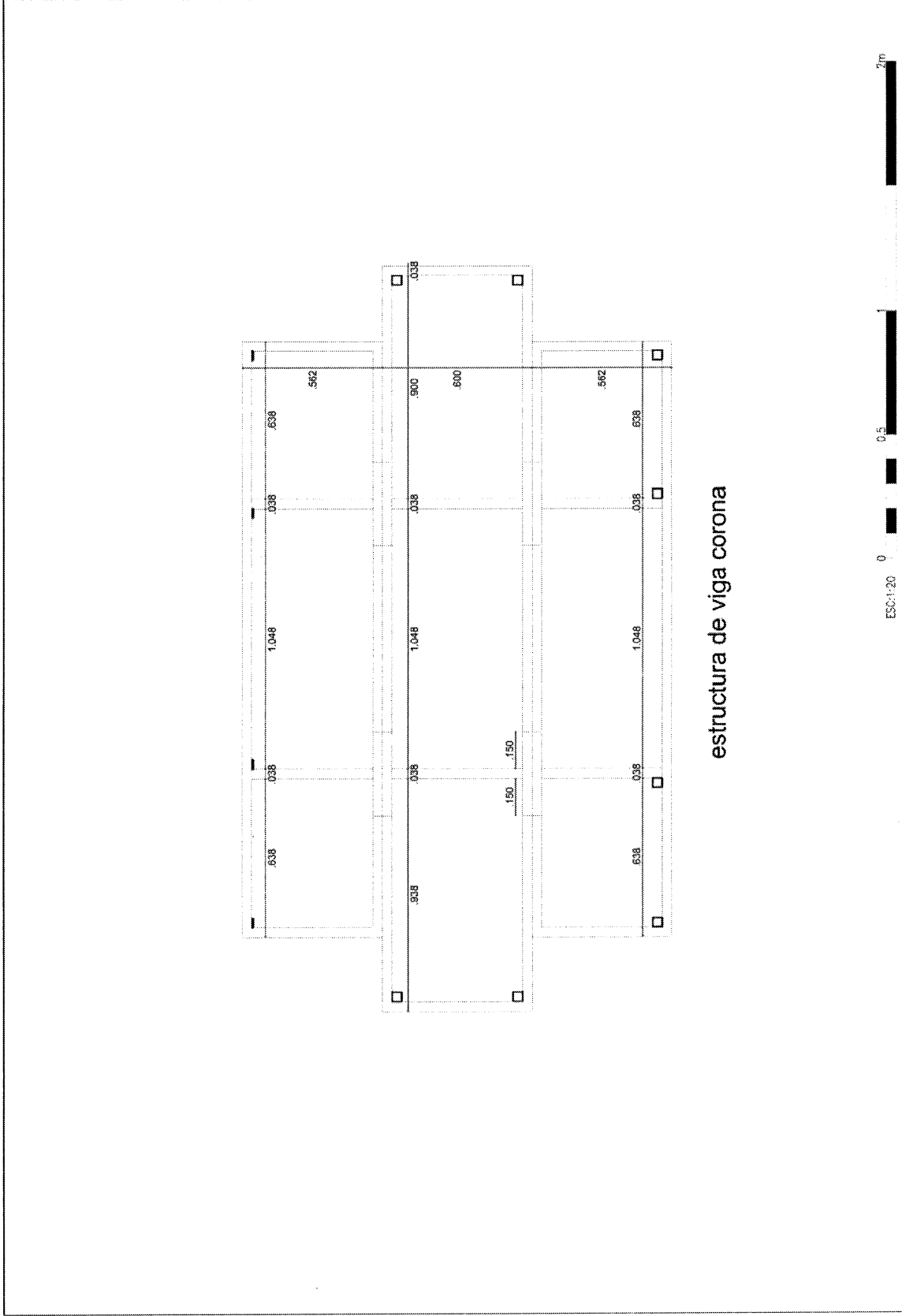
DISEÑOS PUNTO DE INFORMACIÓN TURÍSTICA EXTERIOR



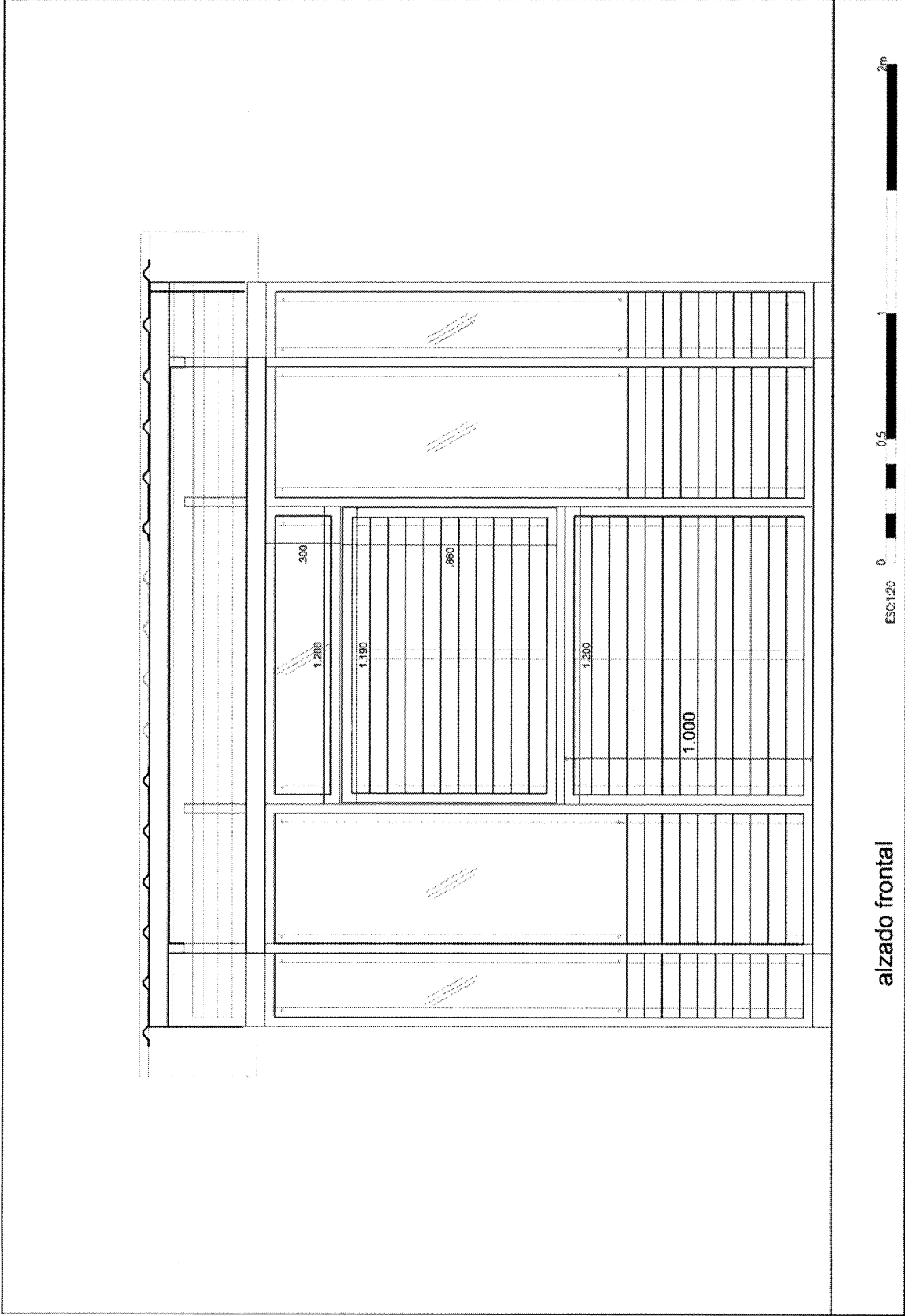


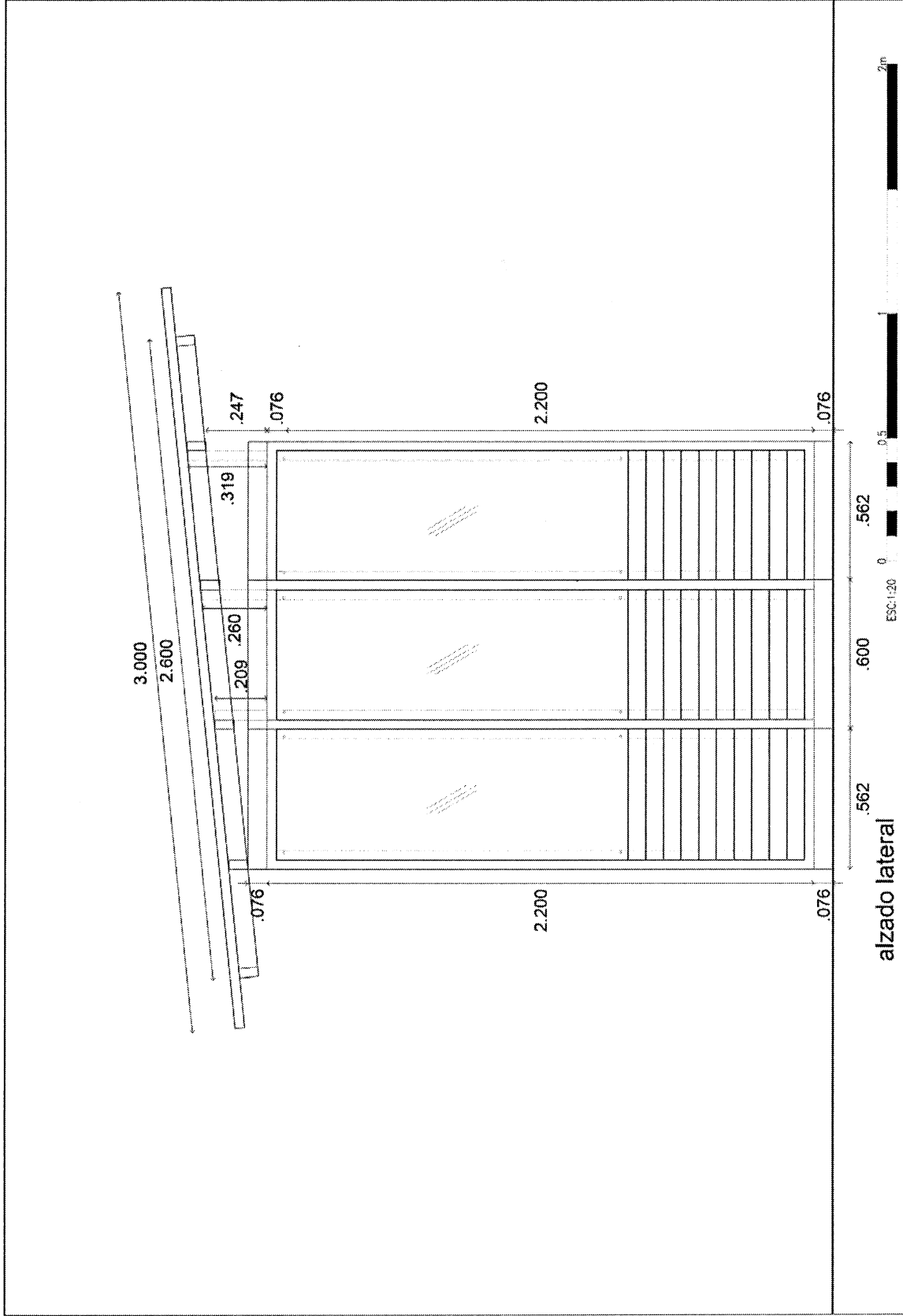


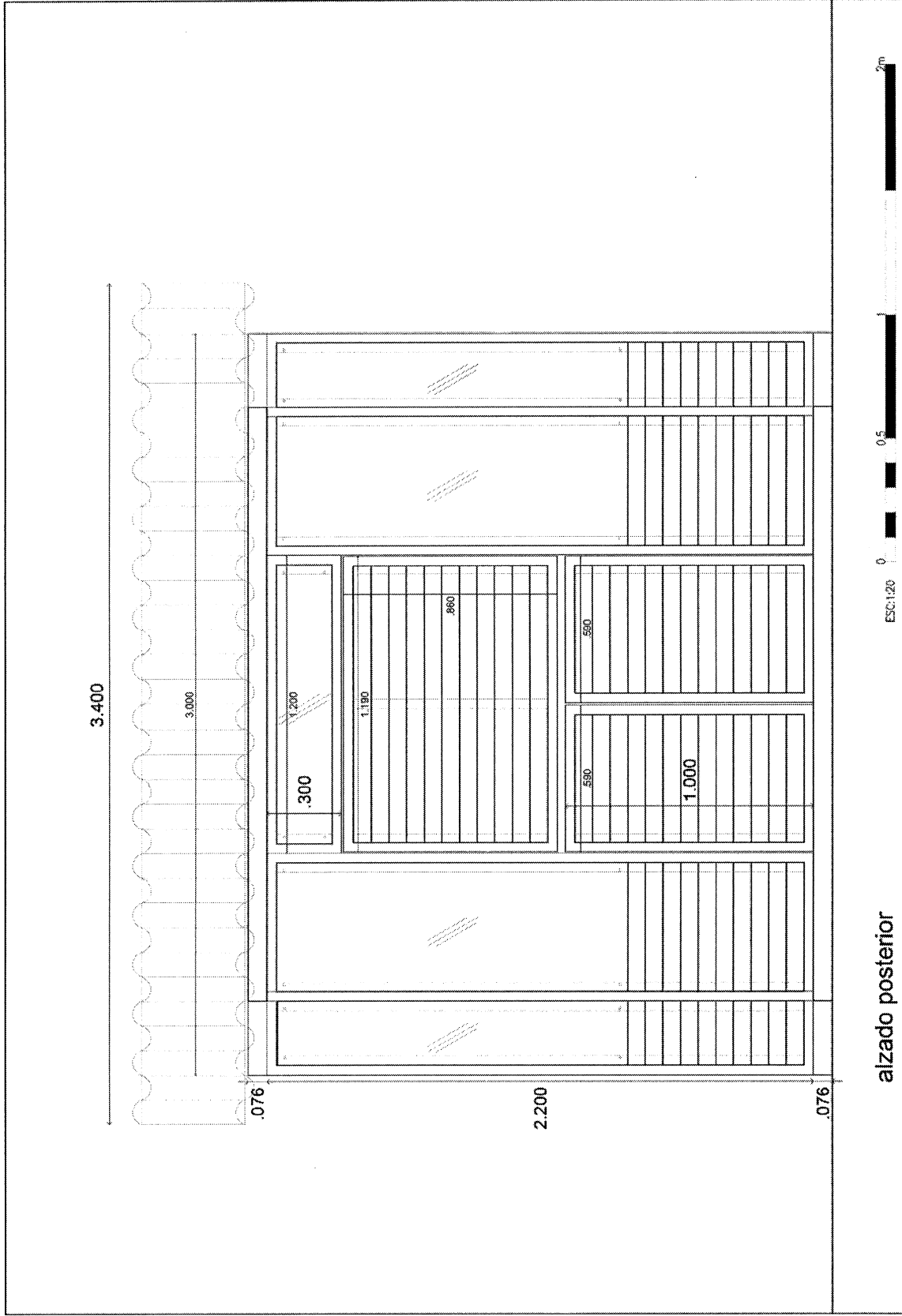


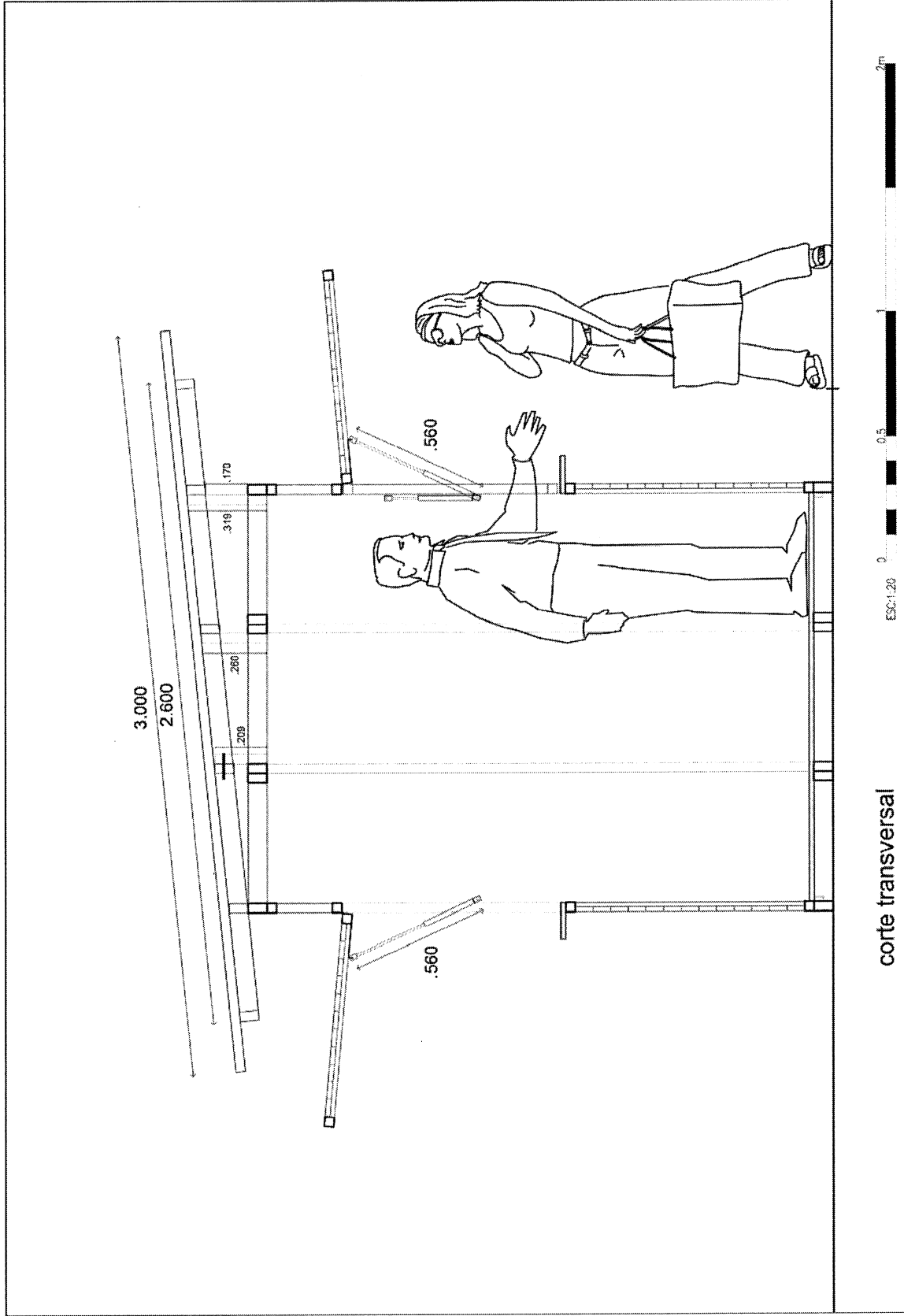


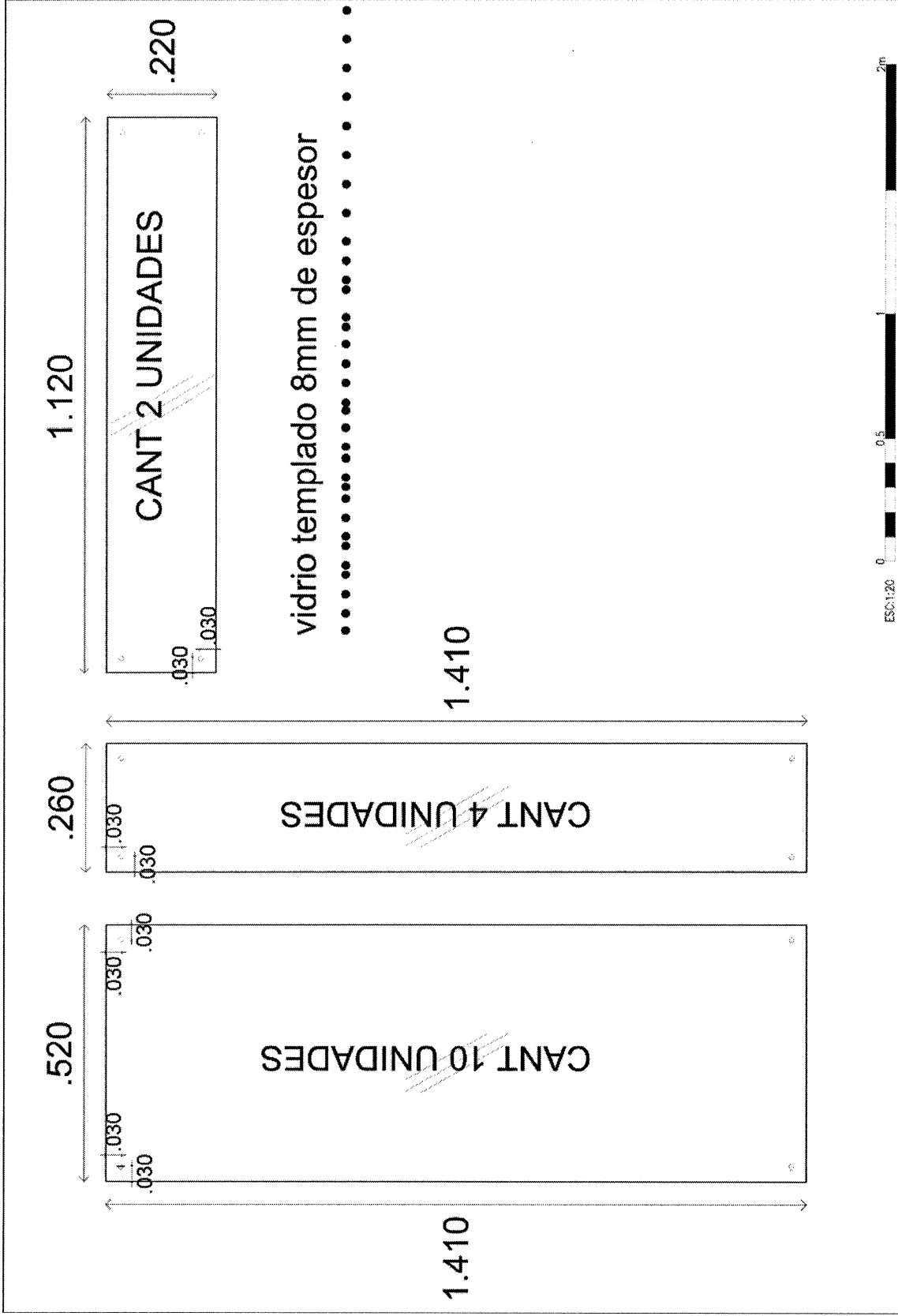
estructura de viga corona

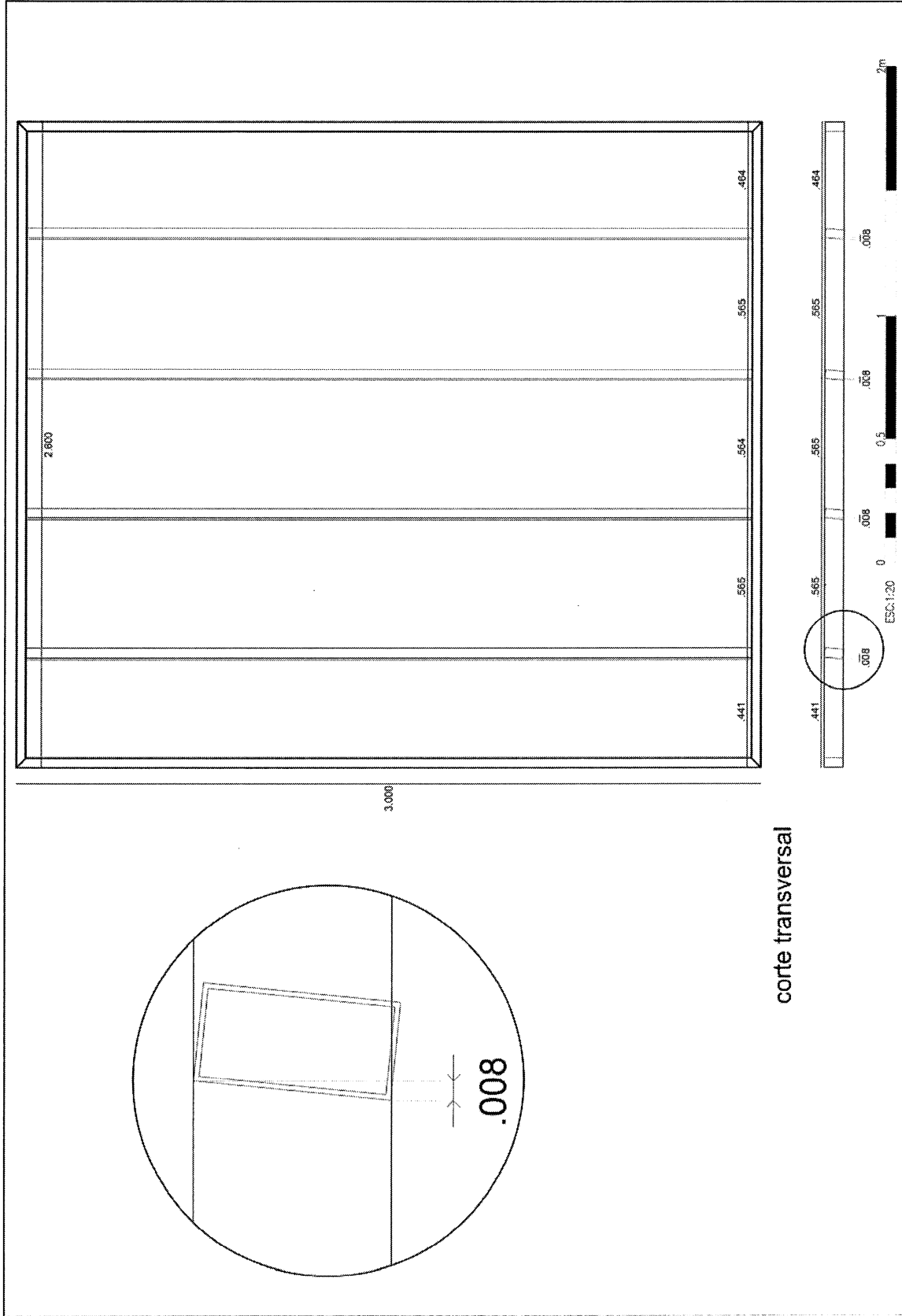


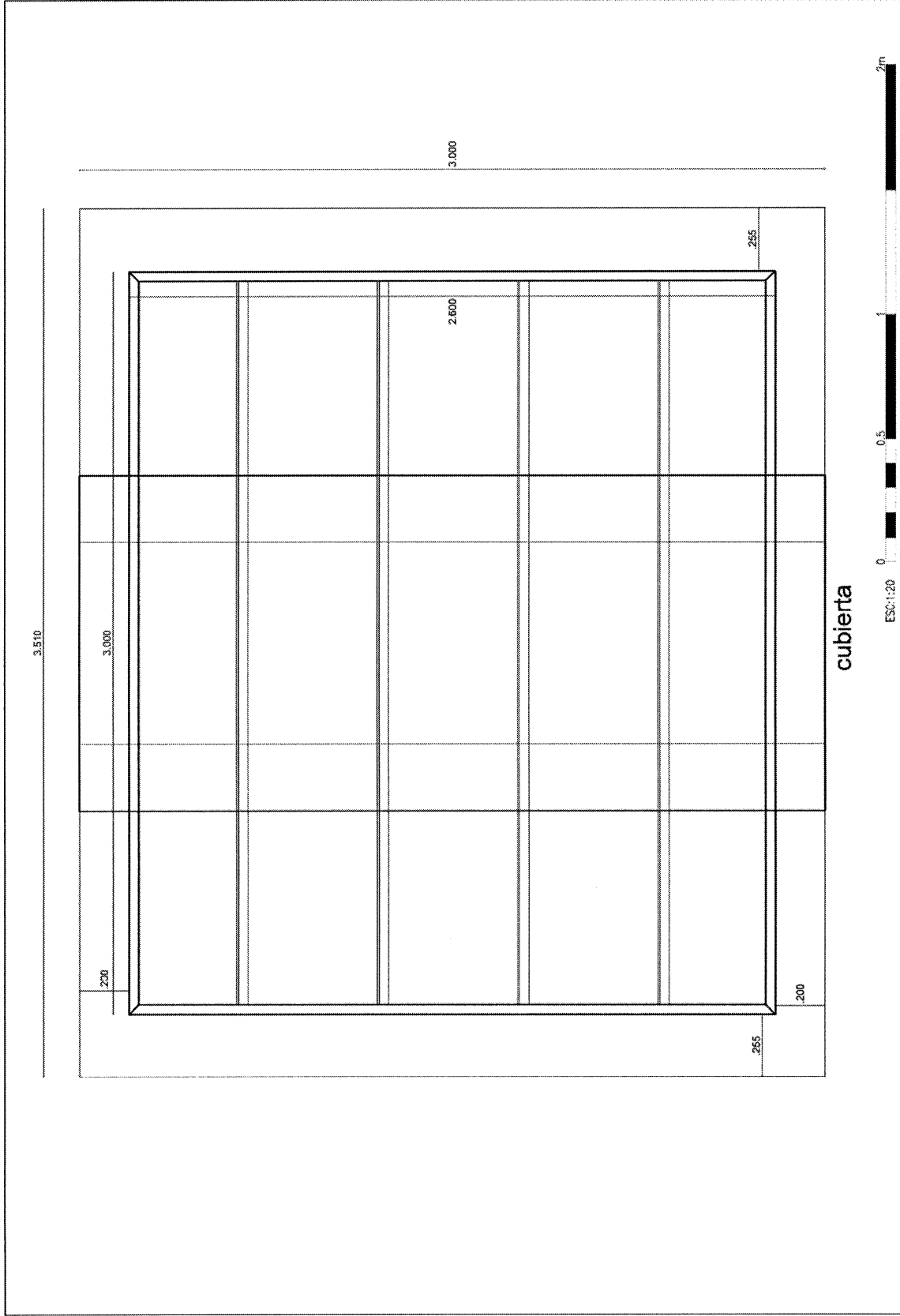


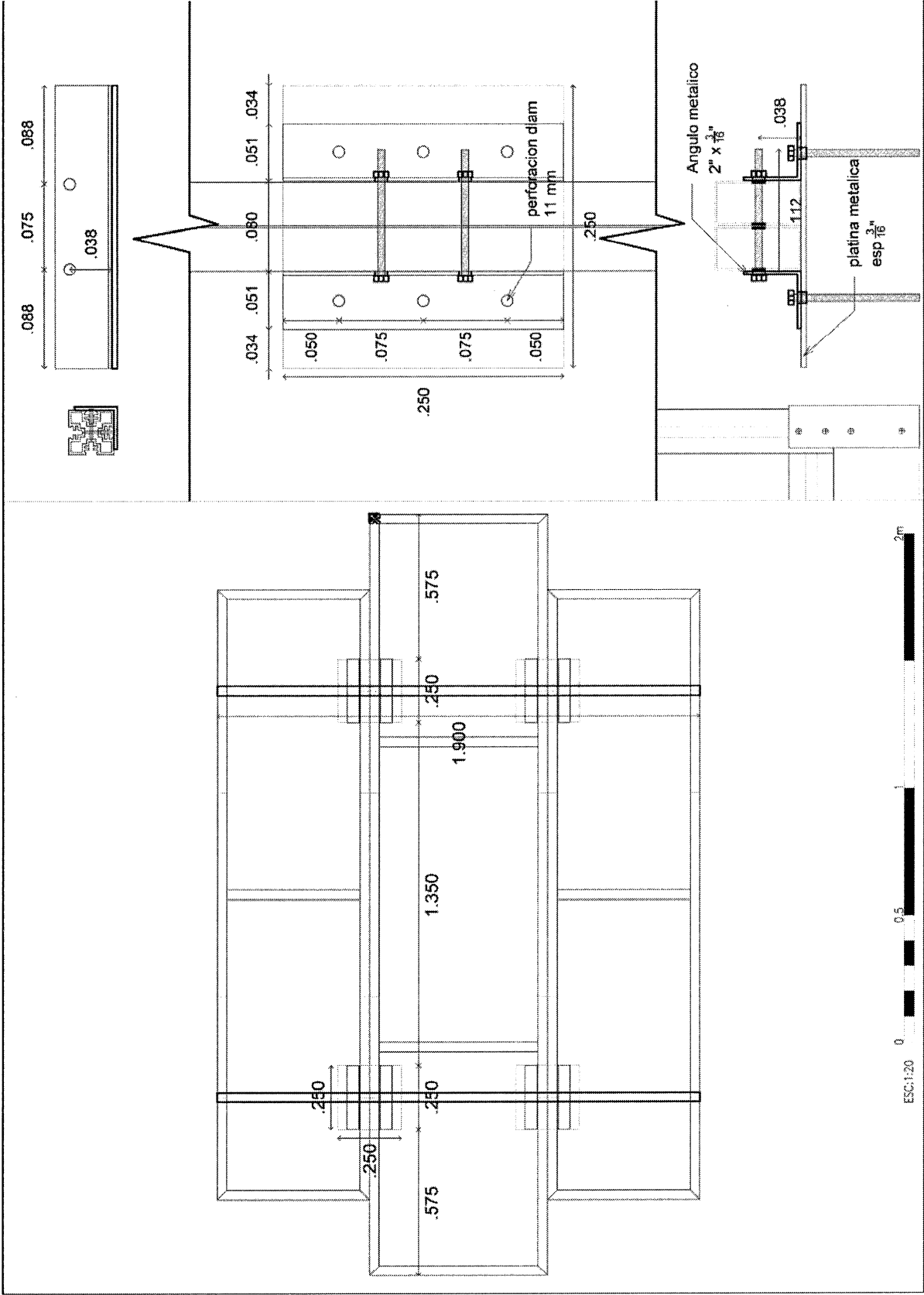




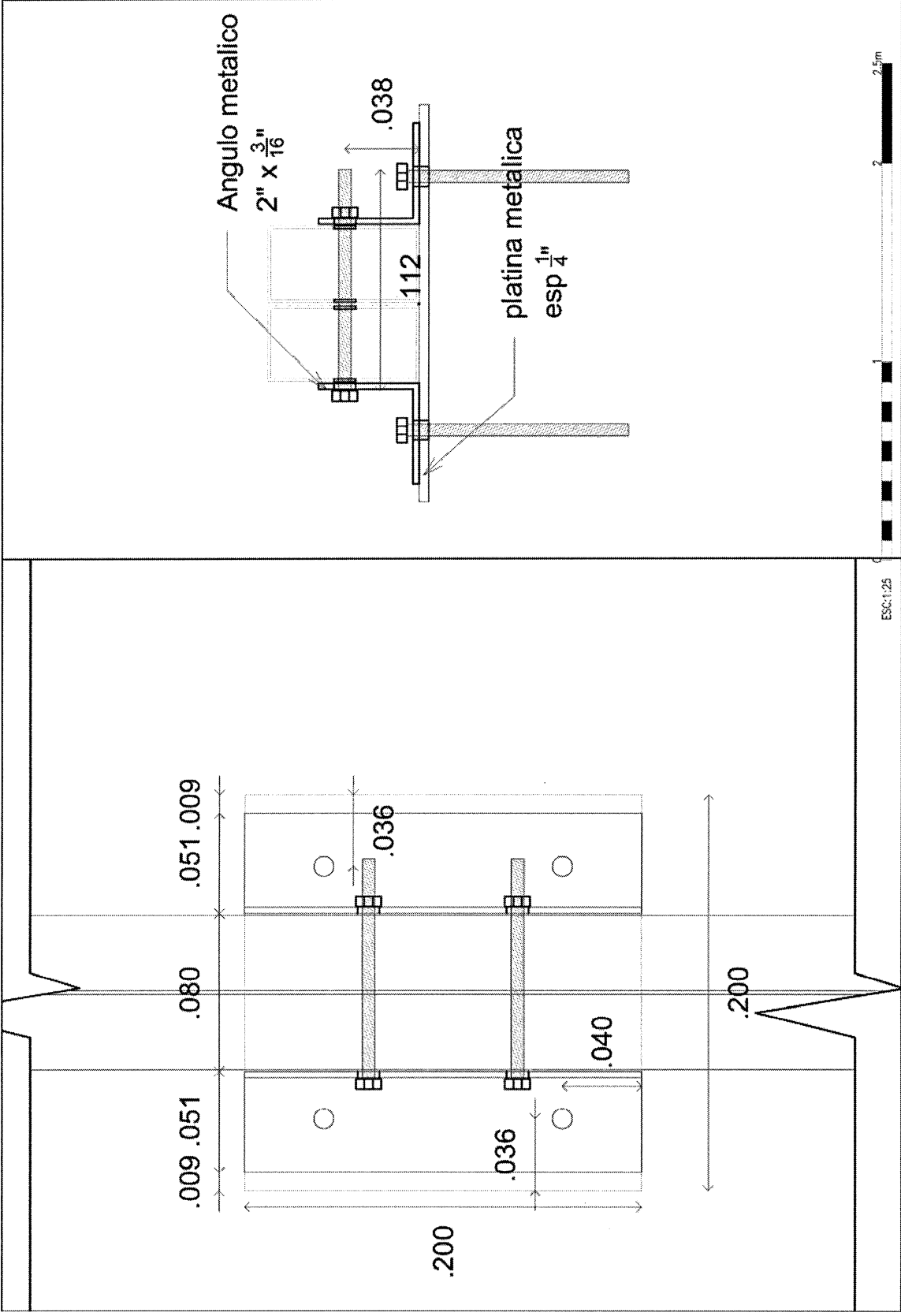


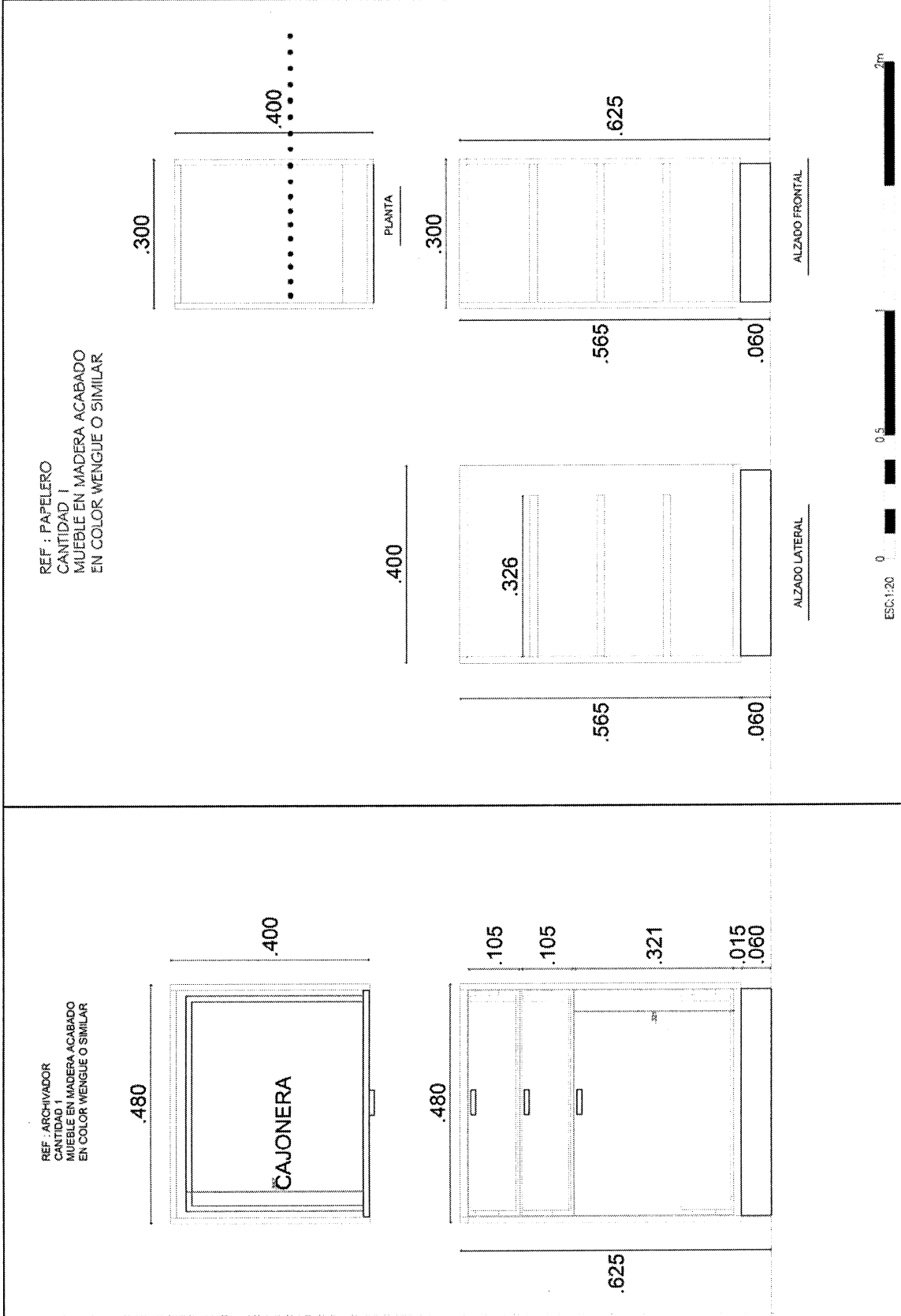




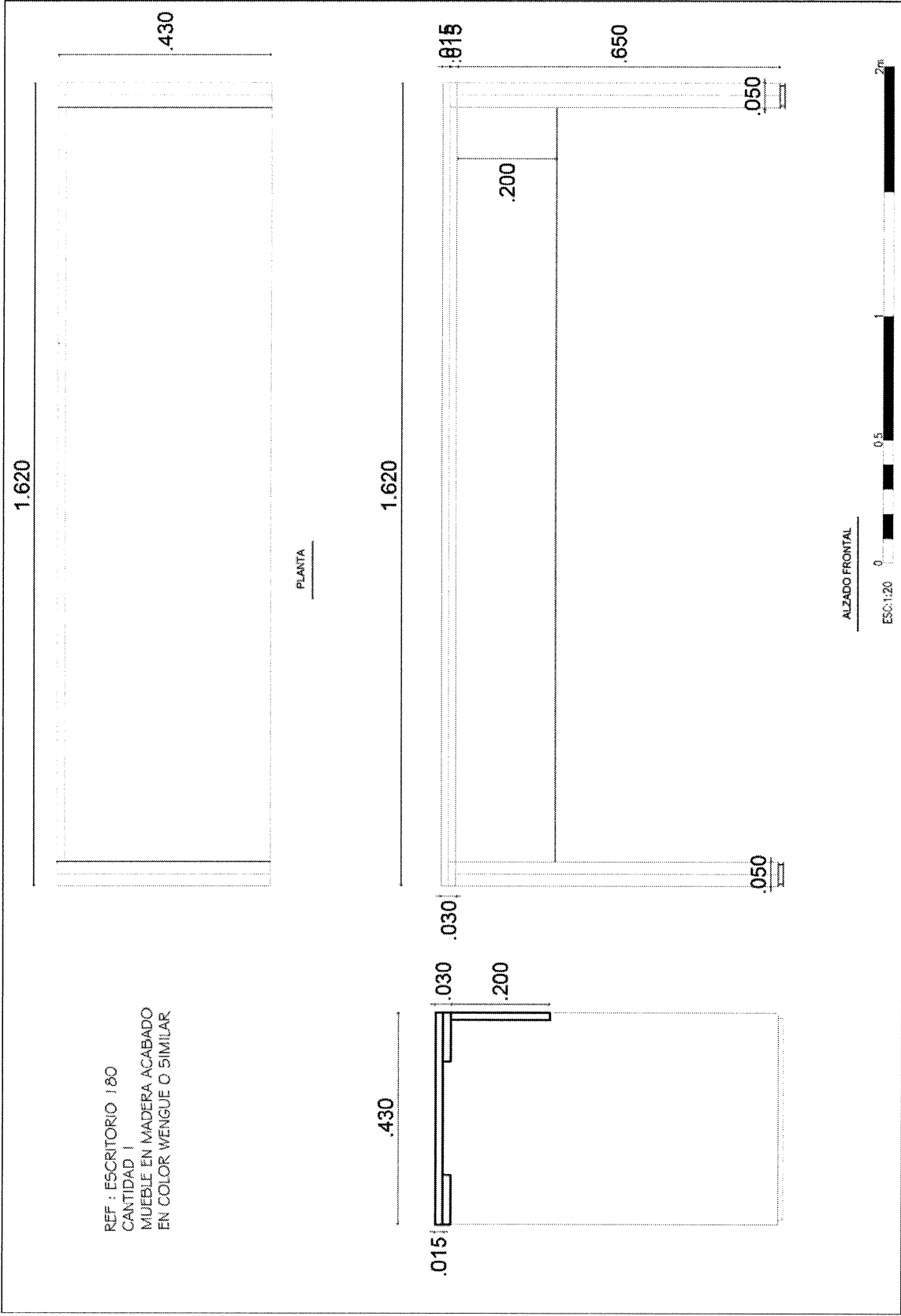


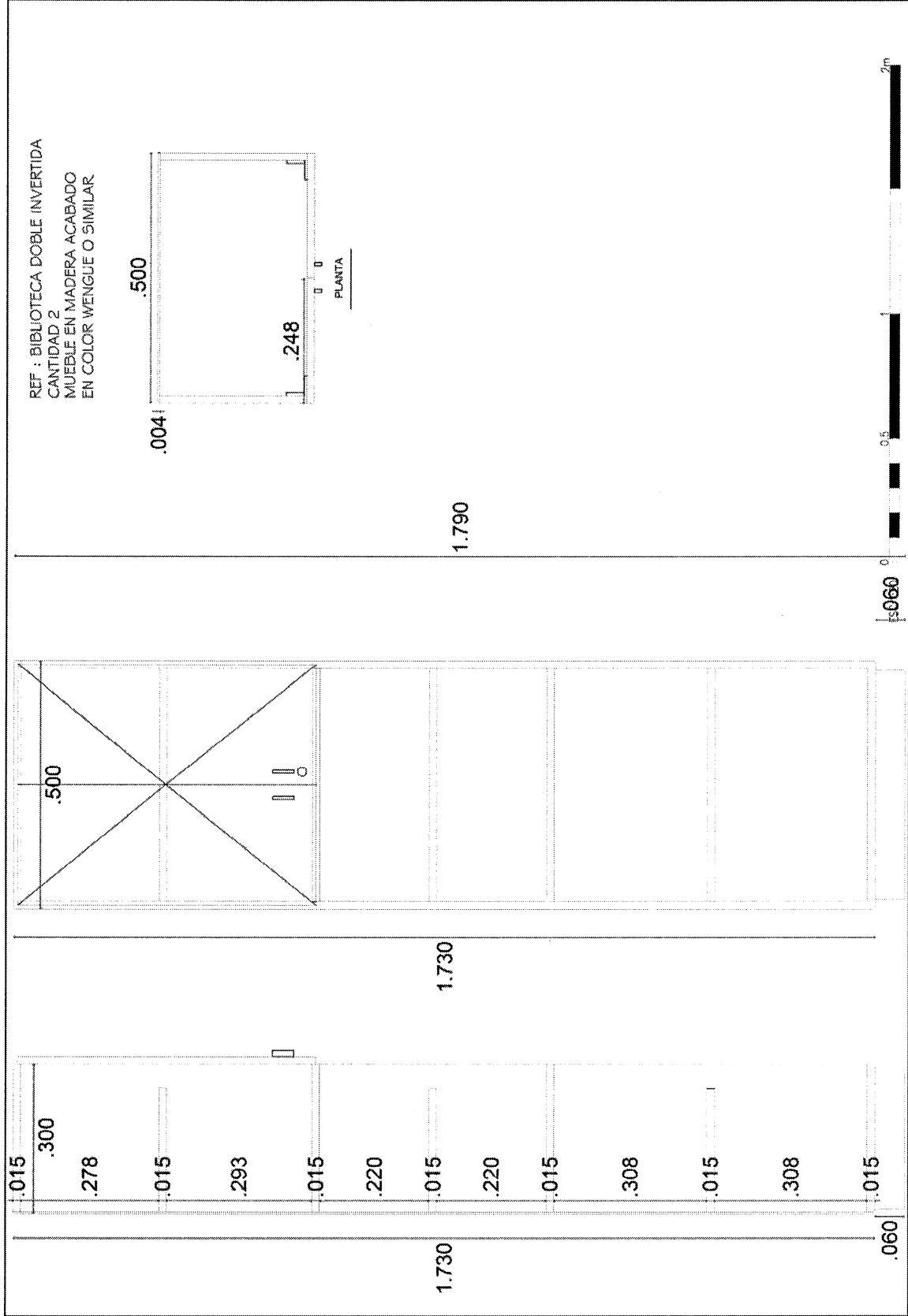
ESC:1:20 0 0.5 2m

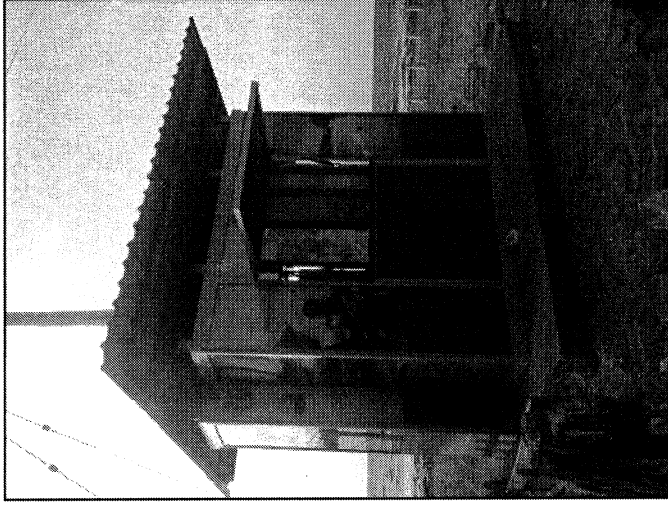
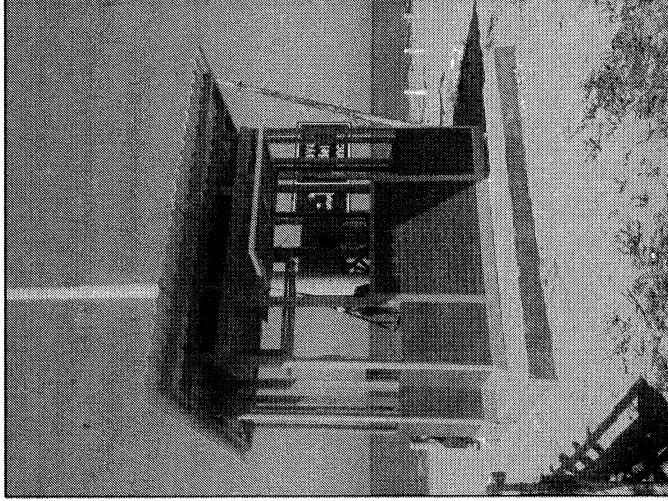
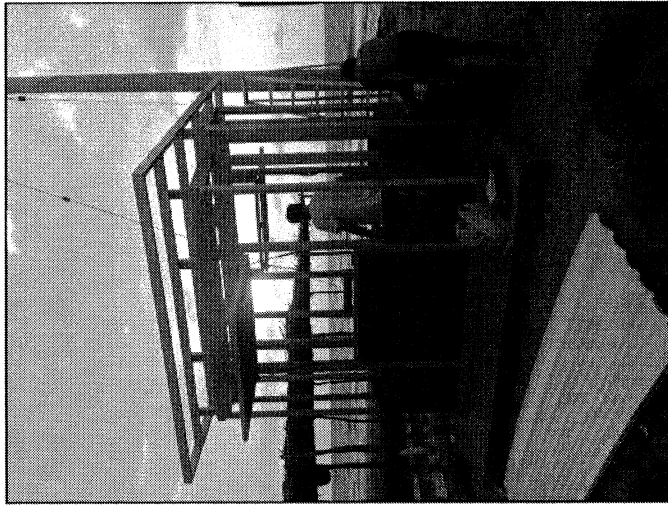




REF : ESCRITORIO 180
CANTIDAD 1
MUEBLE EN MADERA ACABADO
EN COLOR WENGUE O SIMILAR



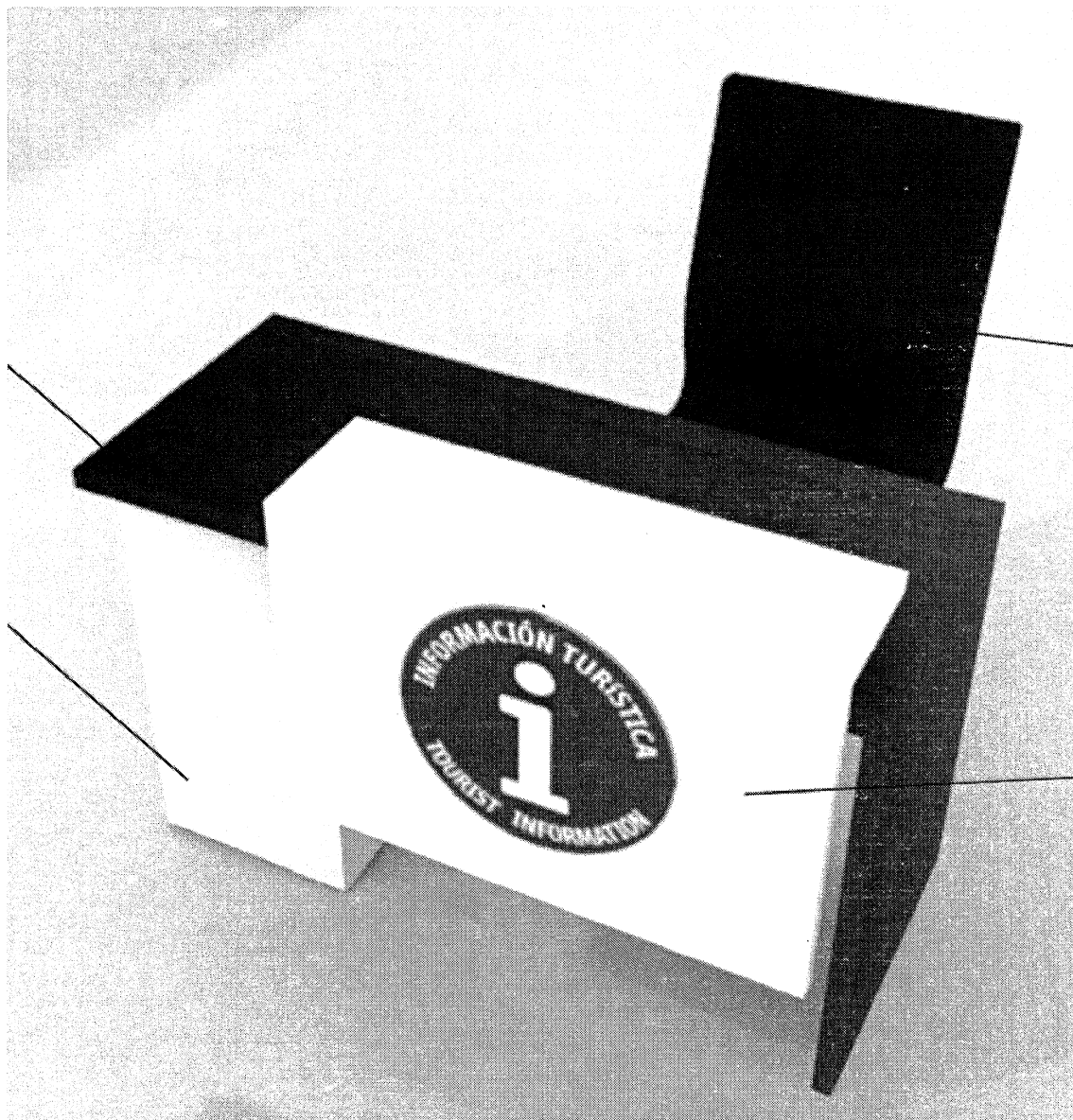




ESCALA: 1:20 0 0.5 2m

Mobiliario para los Puntos de Información Turística locales

Counter de atención para el informador



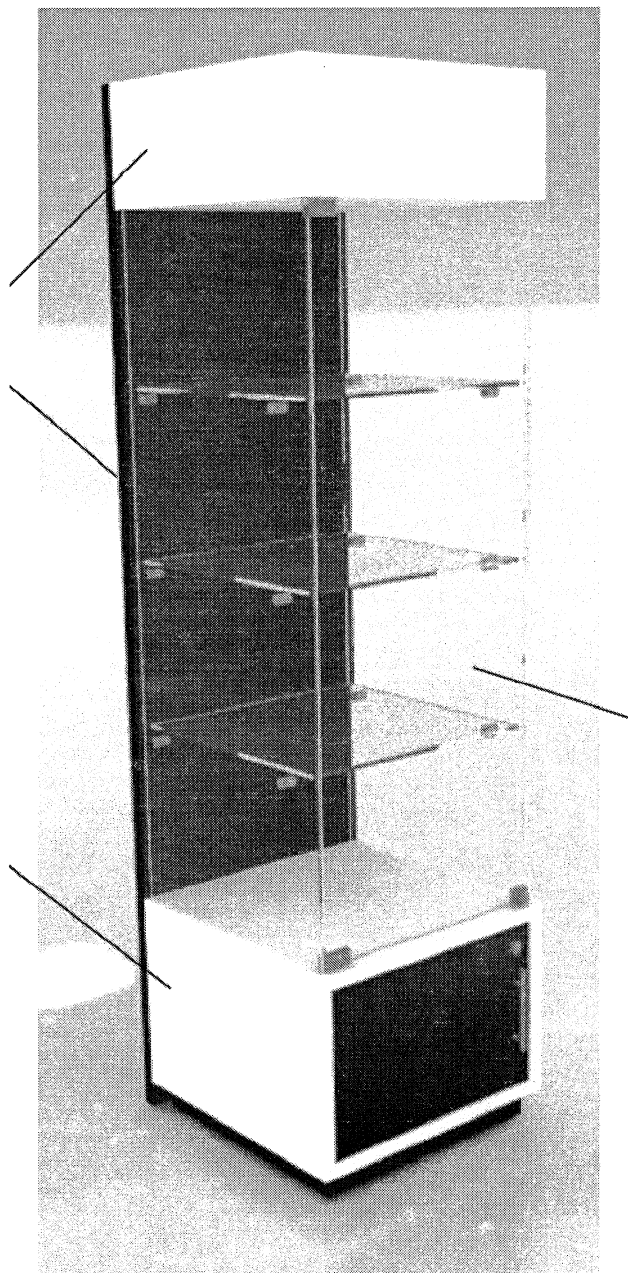
**Counter de atención con silla
secretarial**

Dimensiones: 120 x 50 x 75 cm

Pedestal de autoconsulta para los turistas

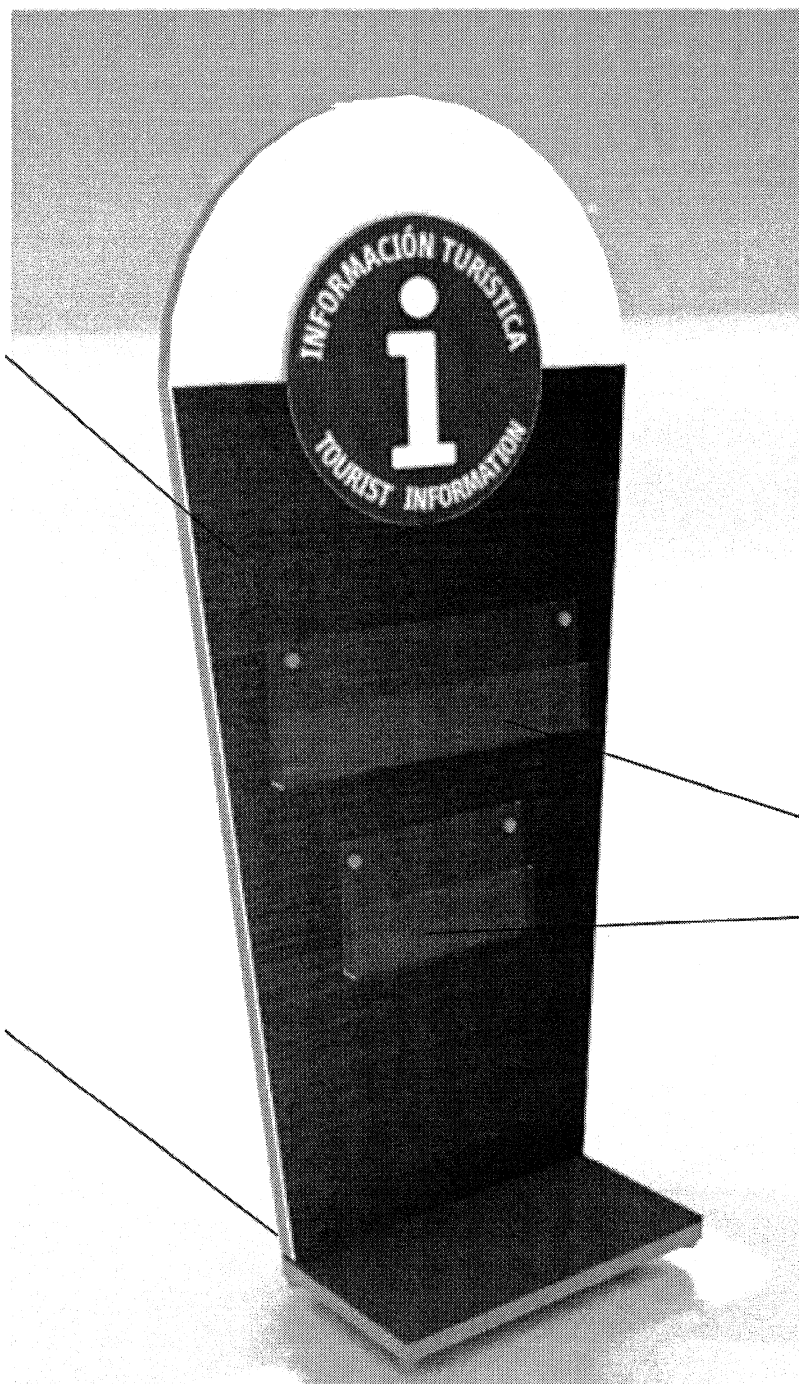


Punto de consulta con sillas altas
Dimensiones: 150 x 50 x 110 cm



Vitrina de exhibición
Dimensiones: 180 x 50 x 50 cm

Totem porta folletos/brochures



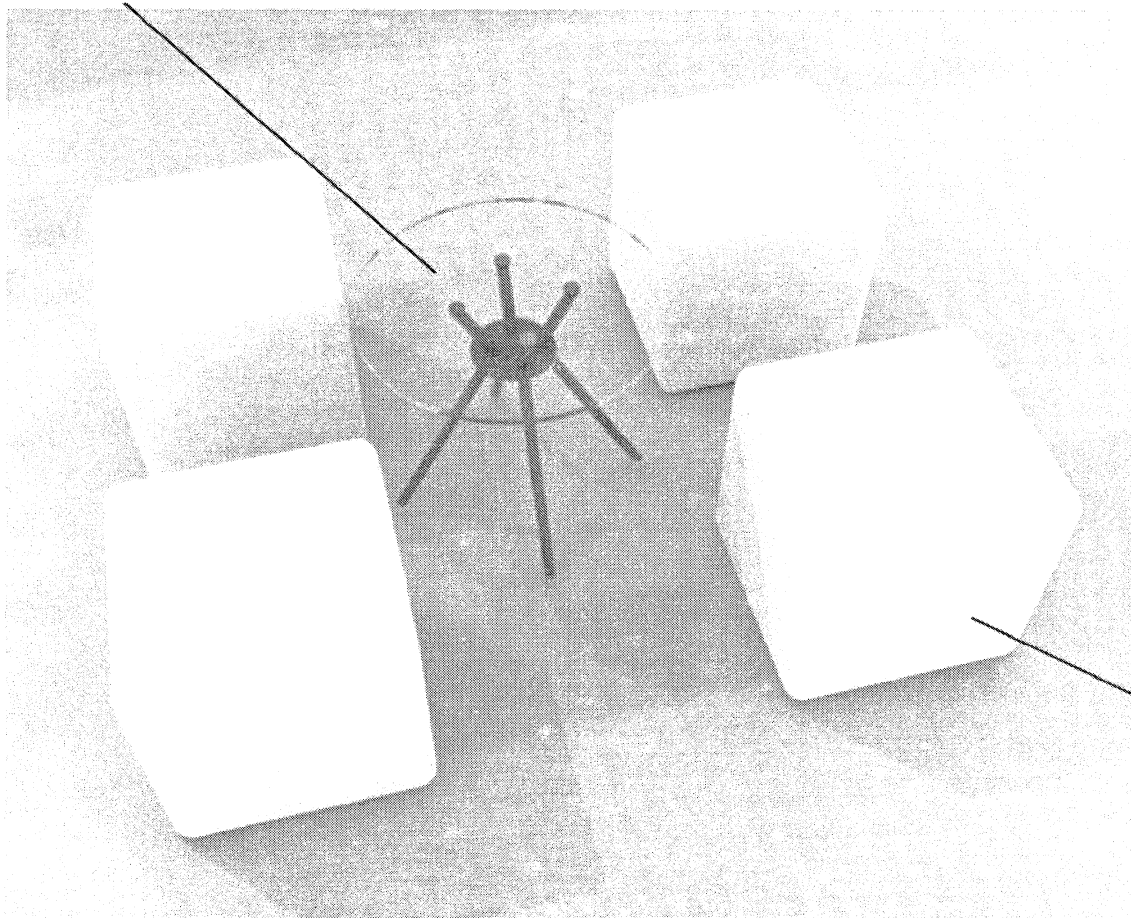
Hablador portafolletos
Dimensiones: 150 x 50 x 50 cm

Pbx: (1) 616 60 44

Carrera 11 N° 86 -53 Edificio Segovia Piso 3°
Bogotá D.C. – Colombia
www.fontur.com.co

Fax:
(1) 616 60 44

Sala de estar/Sala de atención



Aviso interior/exterior

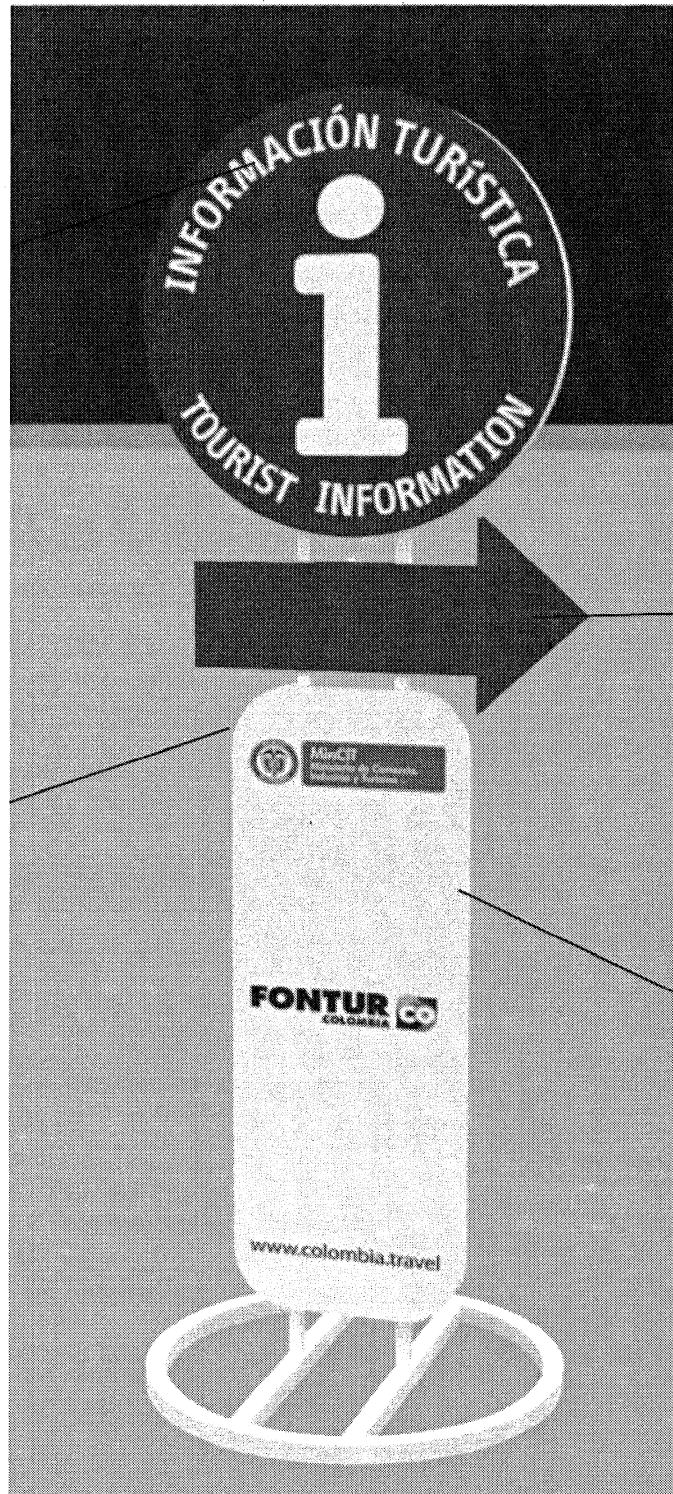


Aviso exterior e interior

Retablos para fotos



Rompetráficos



Hablador metalico exterior



